

A photograph of a woman with dark hair in braids, wearing a red jacket, sitting in a small white boat with red stripes. She is on a body of water, and there are blue plastic bags in the boat. The image is partially obscured by a red vertical bar on the right side.

# **Efforts to Enhance Gender Statistics and Indicators in the Context of Agenda 2030**

**Lorena Aguilar**  
**Global Senior Gender Adviser**  
**Global Director Governance and Rights Programme**

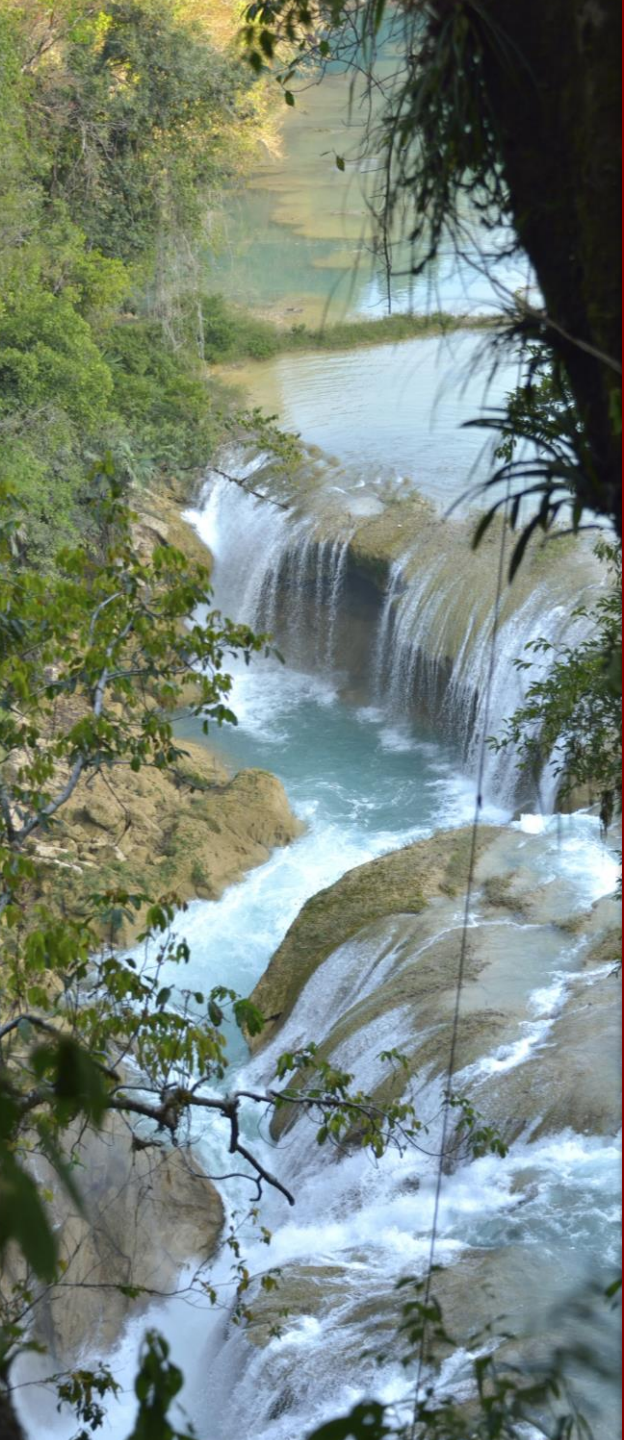
# IUCN Initiatives

- Environment and Gender Information Platform- EGI
  - Gender Index 2013
  - 15 Datasets
  - Tracking national reports
- IUCN-UN Environment Statistics Project



# EGI Platform

- Comprehensive platform that aims to convey the value of gender equality data and information through and for the benefit of environmental conservation sustainable development
- Resource to influence, encourage and assist governments and civil society, to propel gender-responsive environmental policy, practice, and communication





# Key Findings

- Sex-disaggregated data broad country coverage in sectors such as forestry, agriculture, water, energy, disasters, infrastructure- does not exist
- Implementation of global international agreements on gender and environment is lacking in most countries



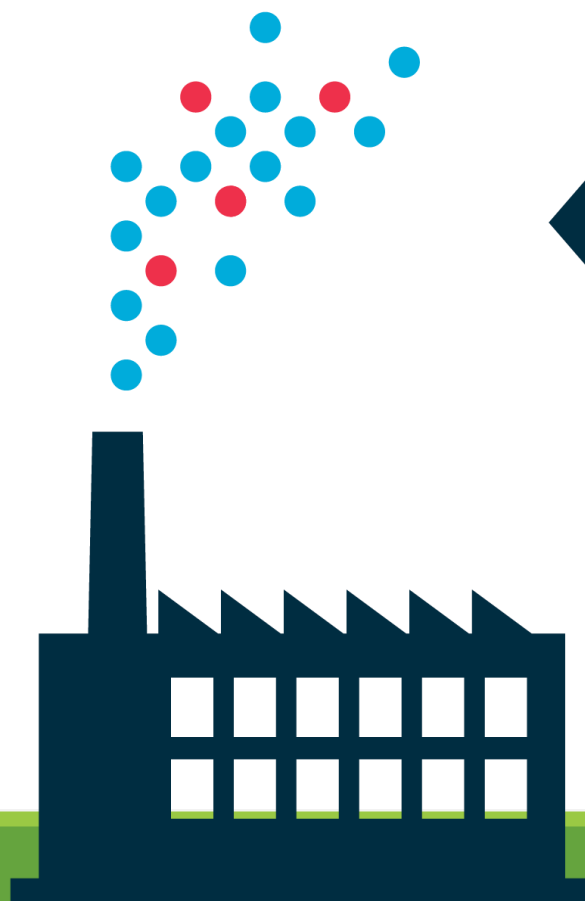
# Gender in NDCs



**40 %**

Of the NDCs submitted as of November 2015, 40% explicitly mention “gender” and/or “women” in the context of their national priorities and ambitions for reducing emissions

# Global GHG Emissions by Parties that Mention Gender/ Women



**19%**

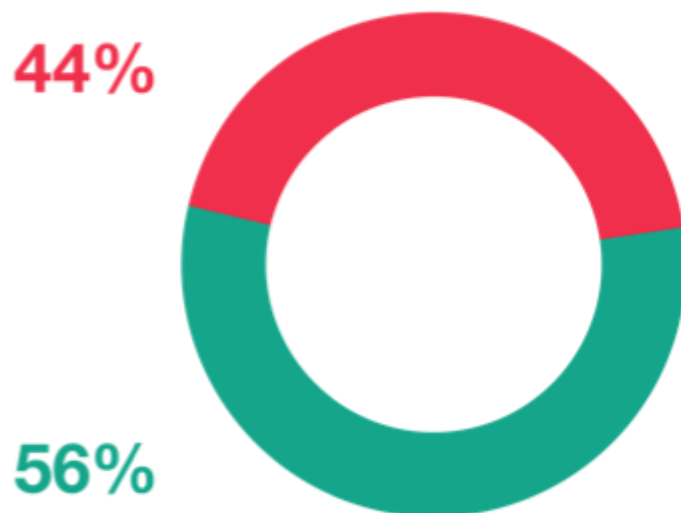
of GHG emissions from 2012 were emitted by the 65 Parties that mention gender in their 2015/2016 INDC;

**81%**

of emissions were from all other Parties.

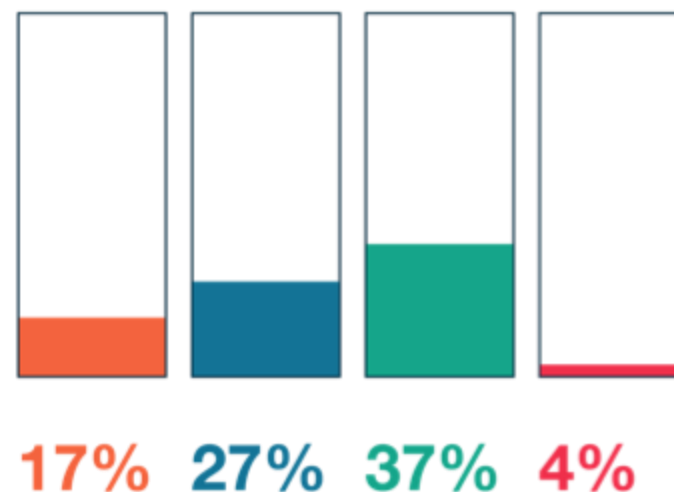
# Gender in NBSAPs

**PERCENTAGE OF 254 TOTAL NBSAPS THAT  
INCLUDE GENDER AND/OR  
WOMEN KEYWORDS (1993 - MAY 2016)**



- Include Keywords
- Do Not Include Keywords

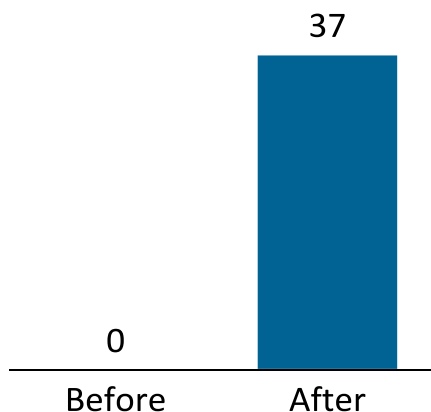
**COUNTRIES' CHARACTERIZATION  
OF WOMEN, BY PERCENTAGE OF  
ALL COUNTRIES**



- Vulnerable
- Beneficiaries
- Stakeholders
- Agents of Change

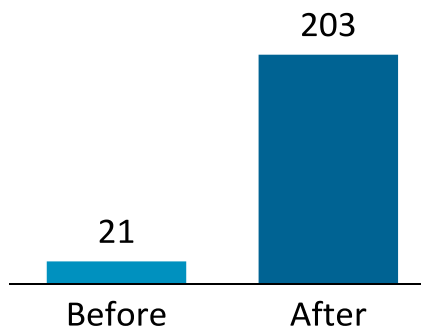
# Results mainstreaming process

## BRAZIL



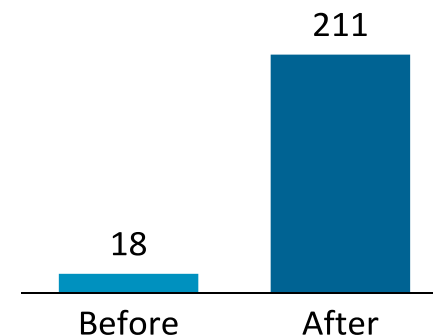
- Incorporates women's participation as one of the objectives
- Includes sex-disaggregated data & gender indicators

## MEXICO



- Considers gender in strategic goals & includes gender-related activities
- Recognises women's differentiated use & management of resources; safeguards traditional natural resource knowledge
- Promotes gender indicators & a gender-responsive M&E system

## UGANDA



- States commitment to mainstream gender in foreword & is reflected in inclusion of gender-related activities
- Promotes gender-responsive actions, such as gender analysis in biodiversity conservation, gender indicators & allocated budgets & a gender-responsive M&E system

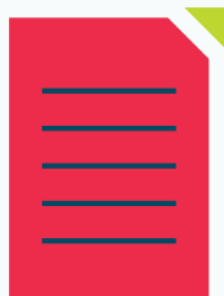


# Gender country action documents SE4All

**18%**

Country action documents not including keywords

**(11 documents)**



**82%**

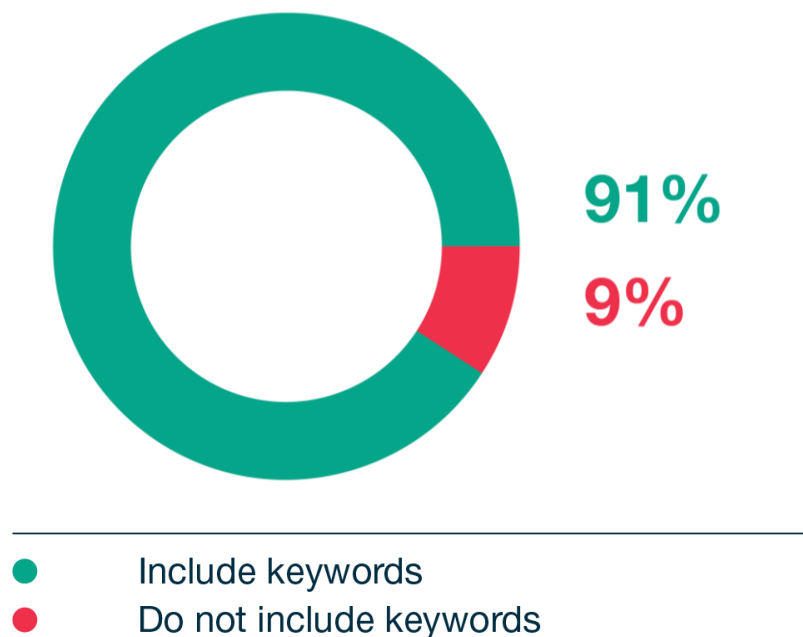
Country action documents including keywords

**(50 documents)**

# Characterization women in country action documents, SE4All



# Inclusion of women/gender keywords NIPs, BRS Conventions

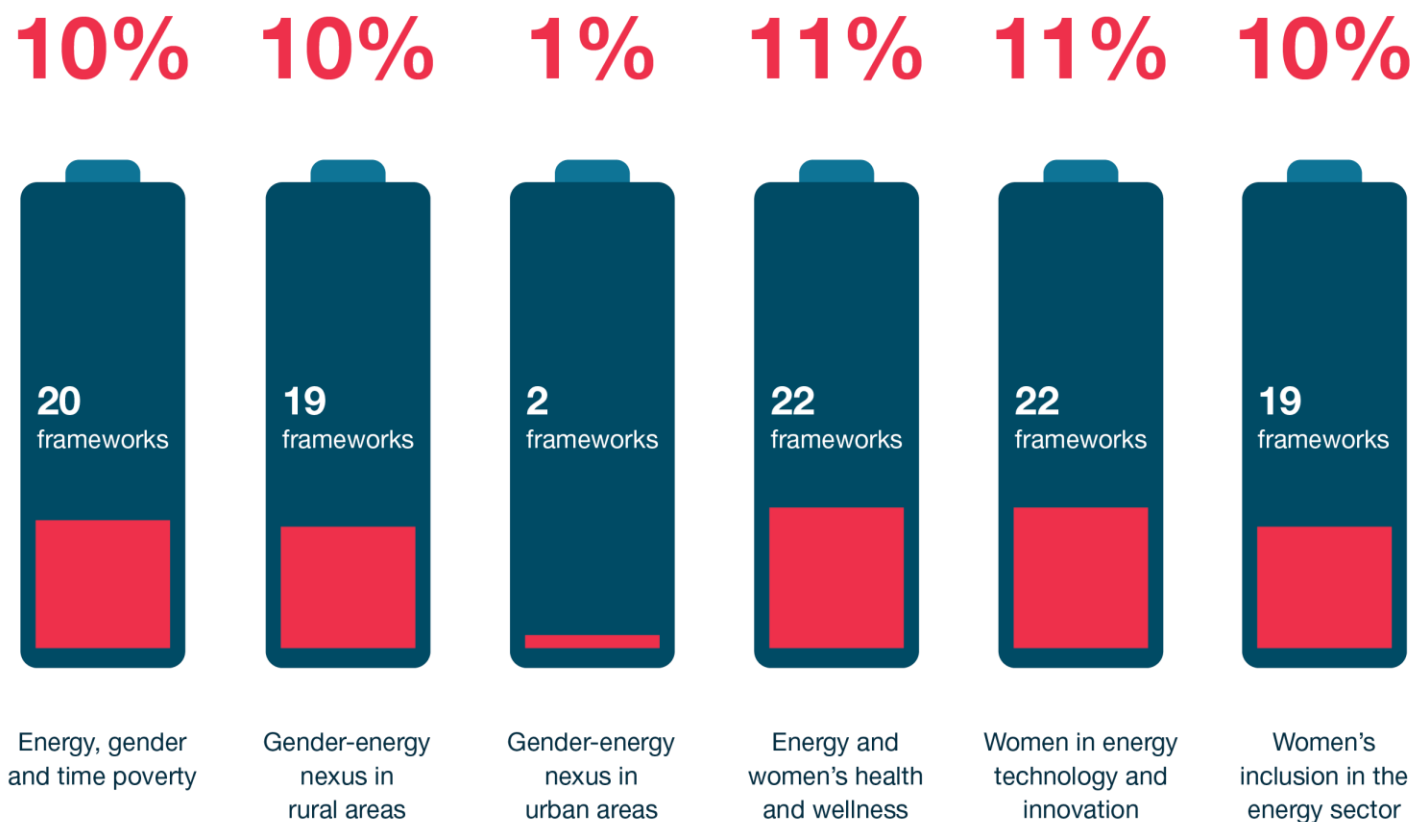


Initial NIPs submitted under the Stockholm Convention from 150 Parties are included in this study

# Gender Keywords in 192 National Energy Frameworks (137 Countries)

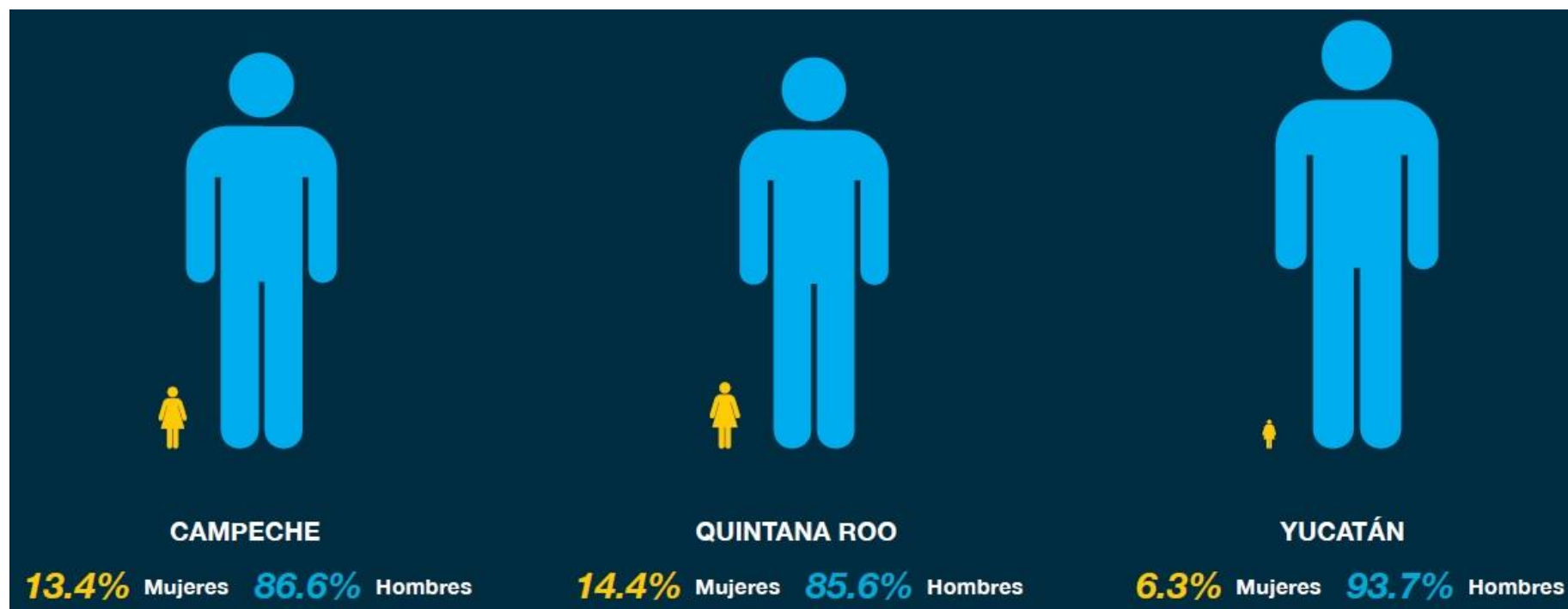


# Cross-cutting Gender Issues in National Energy Frameworks





# Land Property Rights in the Yucatan Peninsula, 2014



Source EGI 2016. Acceso de las mujeres a la propiedad de la tierra y sus recursos. Evaluación de Género y Desarrollo Sostenible en la Península de Yucatan.



# **IUCN UNEnvironment Statistics Project**

# Statistics Project

- Desk review of gender and environment statistics at international level
- Case study countries identification: Lao PDR, Kenya and Mexico
- Inter-Agency Expert Group – Gender Statistics (IAEG-GS) meeting
- Expert consultations



# Priority Areas

- Right to land, natural resources and biodiversity
- Access to food, energy, water and sanitation
- Climate change, sustainable consumption and production, and health and well-being
- Women in environmental decision making



# Access to Food

- Share of food that directly comes from extractive methods (hunting, fishing and collecting) by source of the food, by type of household and geographical location (urban/rural)



# Climate Change

- Number of deaths, missing persons and directly affected persons attributed to weather-related disasters per 100,000 people, by sex
- Mortality rate attributed to environmental causes (unintentional poisoning, air & water quality), by age and sex
- Mortality rate attributed to vector- and water-borne diseases, by sex



# Climate Change

## Transportation

- Proportion of population that
  - (a) has convenient access to public transport by location (urban/rural), sex, age and persons with disabilities; and
  - (b) use public transport by location (urban/rural), sex, age and persons with disabilities



# Climate Change

## Sustainable consumption

- Consumer spending, by sex of head of household
- Household spending by type of product and sex of head of household
- Decision-making over household spending, by product and sex (intra-household decision-making)





# Decision-making

- Women's participation in national and international environmental decision-making fora
- Women decision-making in communal land governance bodies
- Women's participation in forest groups







**YOU CAN'T MANAGE WHAT YOU DON'T MEASURE**

**THANKS**