



Multilateral Assessment
The Netherlands
Marrakesh, 14 November 2016





Overview

- Summary of questions and answers
- GHG Emissions 1990-2015
- Commitment within the EU
- Progress in GHG emission reductions
- Projected GHG emissions 2020, non-ETS
- Policies and Measures
- Involvement of non-Party stakeholders
- Concluding remarks

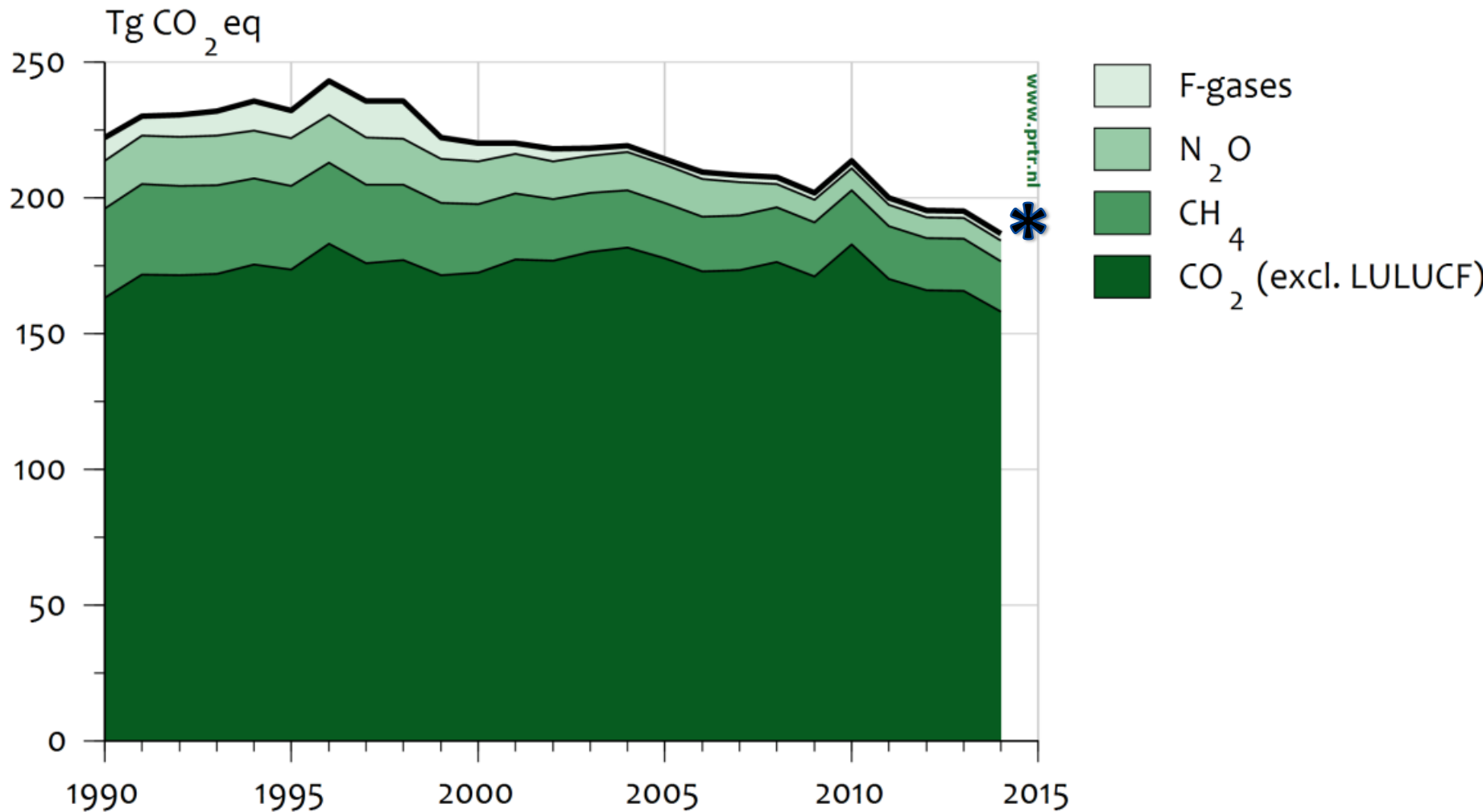


Summary of questions and answers

- 10 Questions from 5 Parties
- Range of topics
 - LULUCF and projections
 - Impact of Policies and Measures
 - Carbon Capture and Storage (CCS)
 - 25% reduction by 2020
 - Institutional arrangement and the involvement of organisation in projections



GHG Emissions 1990-2015

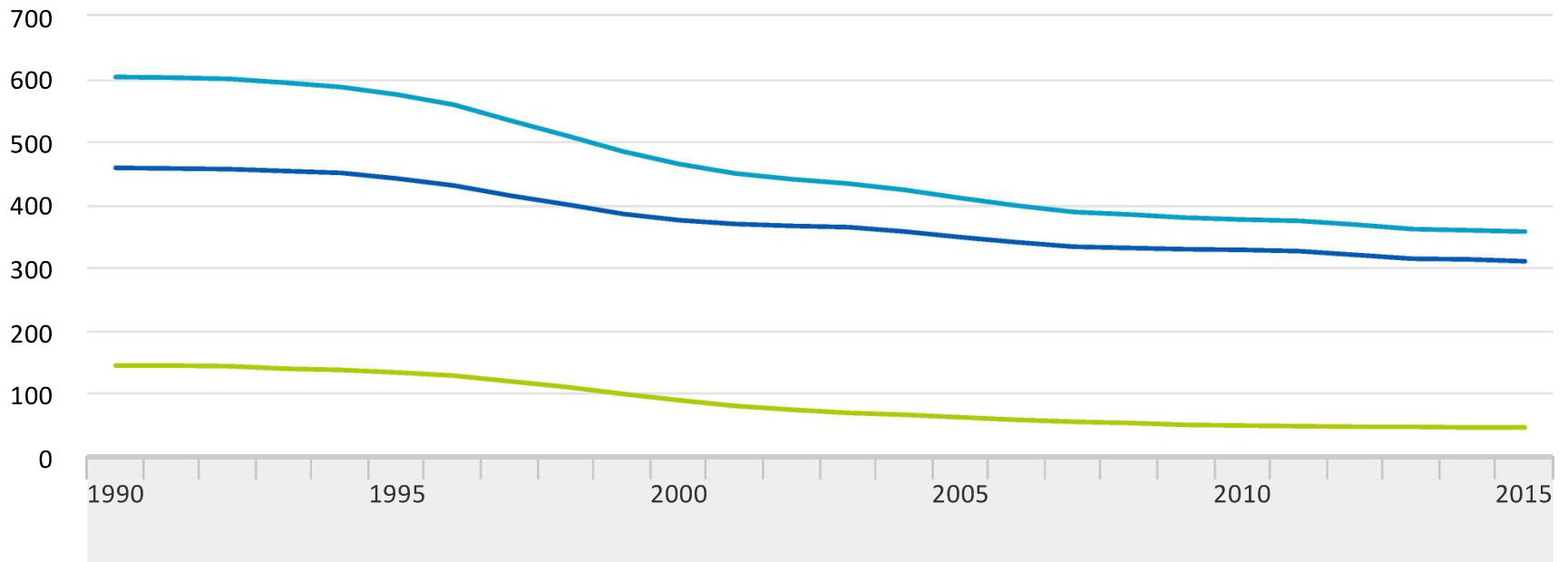




GHG Emissions intensity

Emission intensity Dutch economy (average over five-year period)

kg CO2 equivalents per 1,000 euros



— Total greenhouse gases — Carbon dioxide — Other greenhouse gases



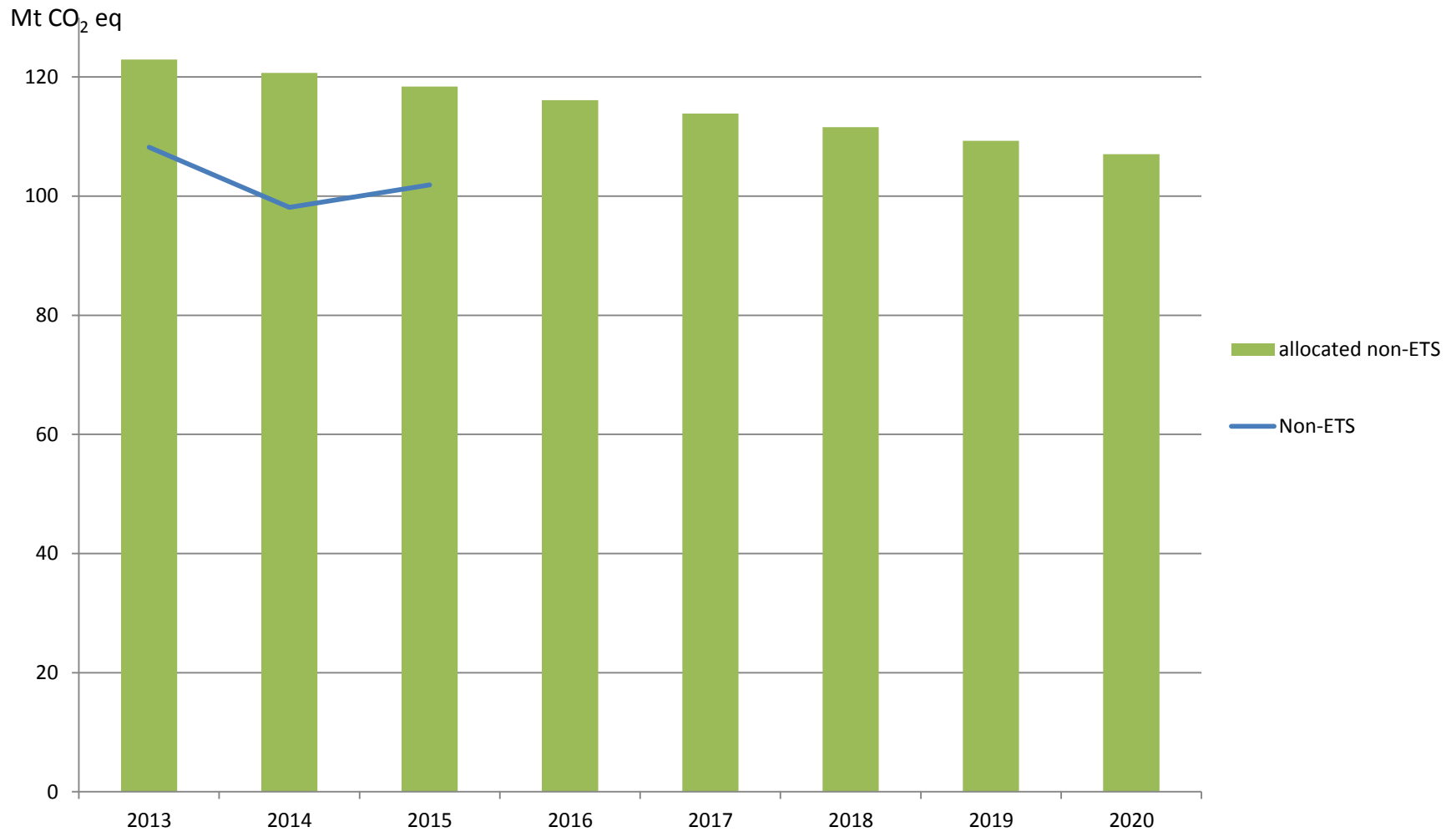
Netherlands' commitment within the EU

Reduce emissions in sectors not covered by the EU ETS (non-ETS) by **16%** compared to 2005 emissions. The cumulative amount of AEAs for the period 2013-2020 is set at 920 Mton CO₂-equivalents

Year	Annual Emission Allocations (t CO ₂ eq.)	Year	Annual Emission Allocations (t CO ₂ eq.)
2013	122,948,129	2017	113,859,321
2014	120,675,928	2018	111,587,118
2015	118,403,725	2019	109,314,916
2016	116,131,523	2020	107,042,714

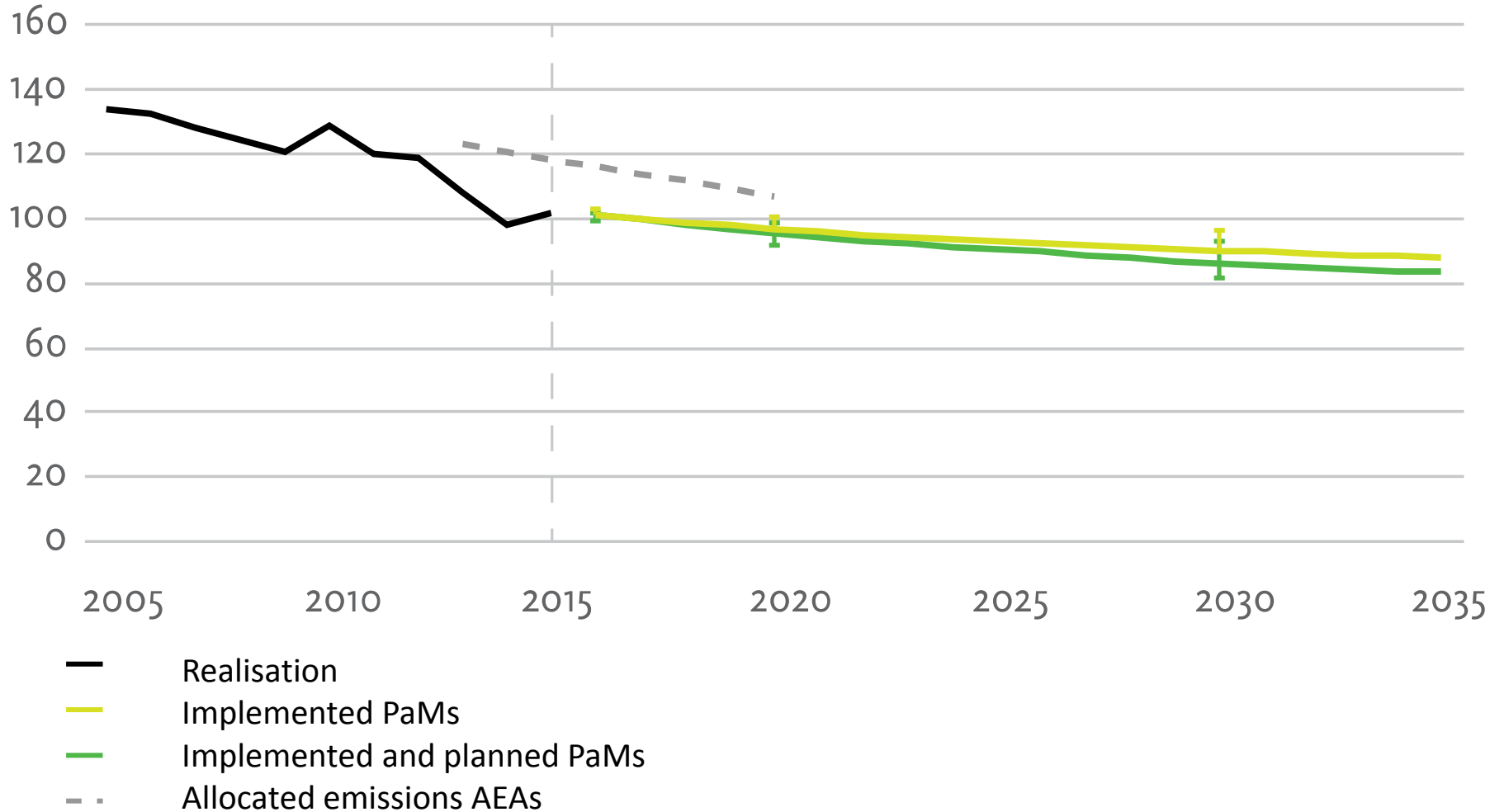


GHG emission non-ETS 2013-2015*



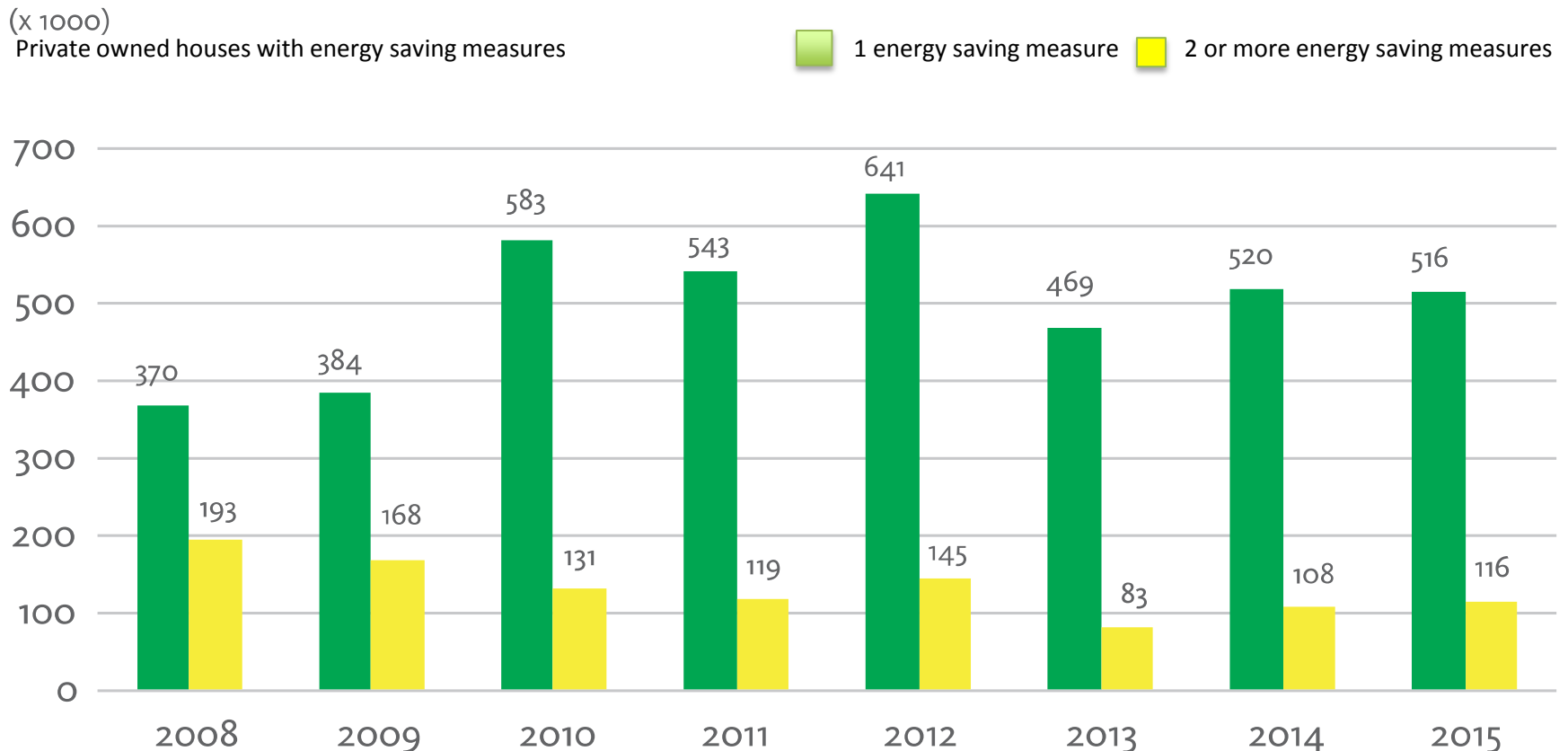


Projected GHG emissions non-ETS



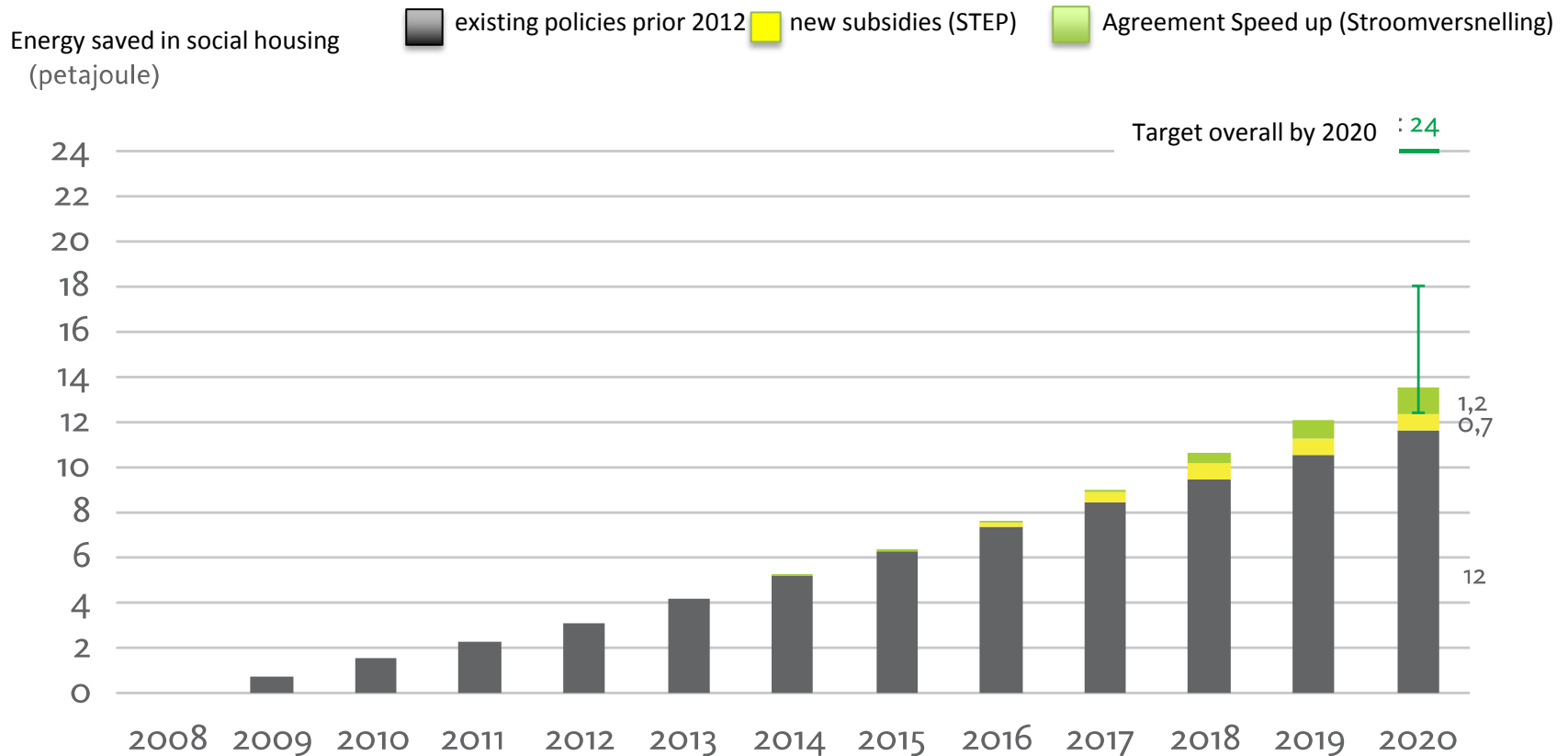


Impact of Policies and Measures; example private owned homes



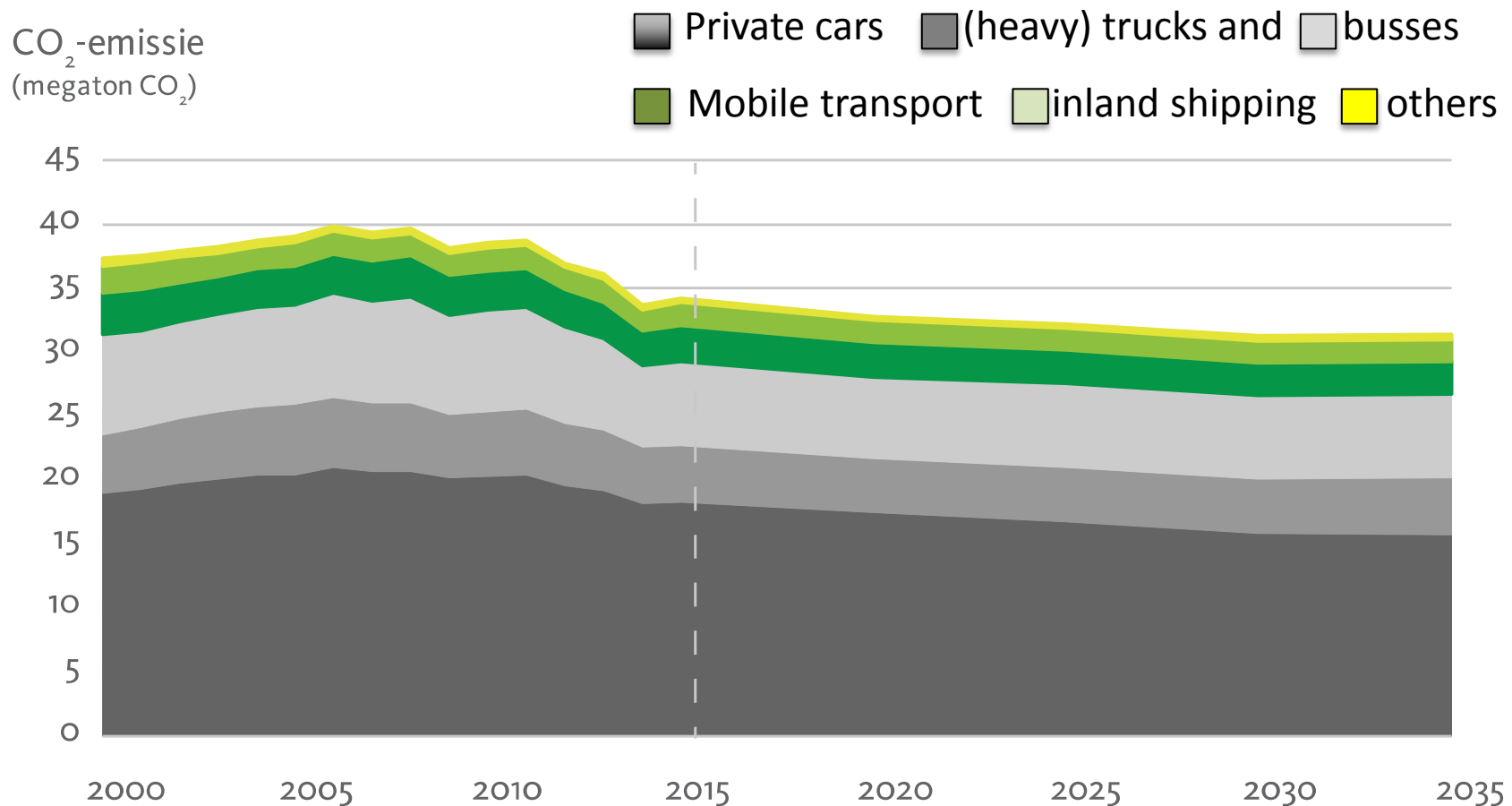


Impact of Policies and Measures; example energy saving in social housing





Impact of Policies and Measures; example transport





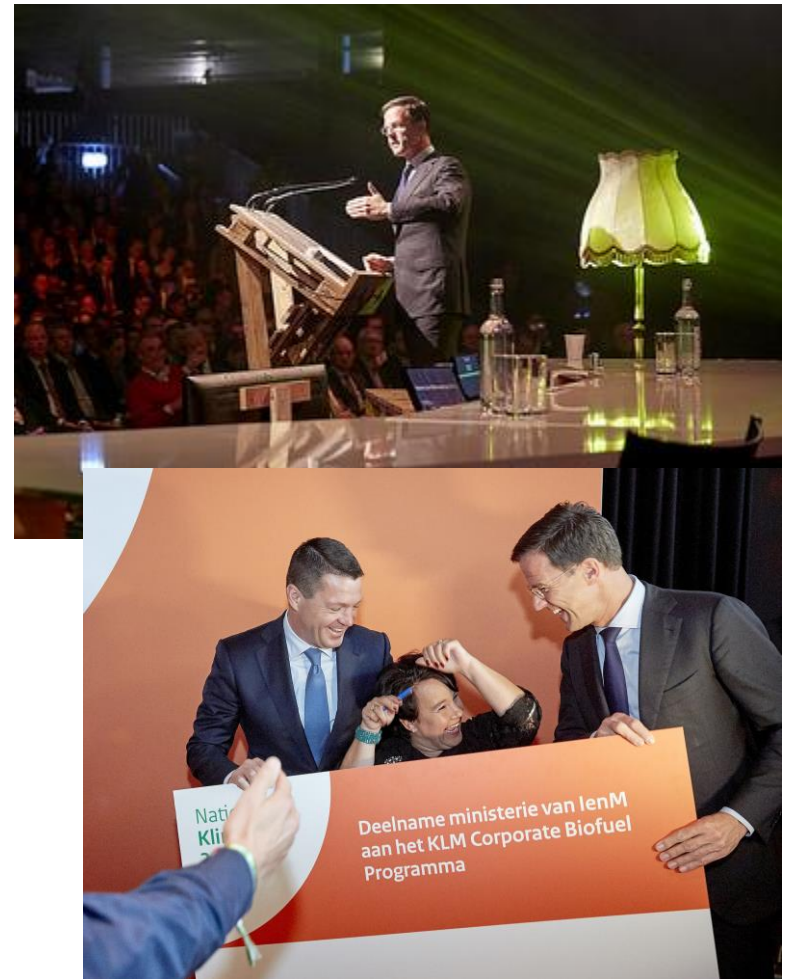
Broad based Coalition; Examples

- **Energy Agreement for Sustainable Growth**
- **Long-Term Agreements Energy Efficiency**
 - **Industries**
 - **Agricultural organisations**
 - **Non-profit organisations**
- **Green Deals**
- **Dutch Climate Coalition**
- **National Climate Summit 2016**



National Climate Summit – “Bring Paris Home” 26 October 2016

- 1,700 participants from NGOs, business, local authorities, government
- Prime-minister Rutte /Environment minister Sharon Dijksma
- Policy debates with Mayor of Rotterdam, CEOs of Greenpeace, Shell, KLM, ABP, Tesla, Port of Rotterdam, etc.)
- 50 break out group sessions
- Children Climate Summit





National Climate Change Summit – results delivered

- 14 climate deals in various sectors
- Estimated impact 17 Mton reduction by 2030 (= equivalent of 9% of current NL emissions)
- Unprecedented media attention
- Enhanced societal and political momentum



<http://www.ecofys.com/en/news/ecofys-assesses-co2-impact-of-the-dutch-climate-summit-2016/>



National Adaptation Strategy

- Delta program:
 - Flood protection
 - availability of fresh water
 - Climate-proof and water-resilient spatial planning
- 2017 National Adaptation strategy
 - Water, energy, ICT, transport & infrastructure, agriculture and fishery, nature and health



Concluding remarks

- We make good progress and expect to meet our target by 2020
- We continue to evaluate and improve our Policies and Measures
- We are committed to get all stakeholders involved in actions to reduce GHG emissions